



Govt. of Uttarakhand

## DEPARTMENT OF HORTICULTURE & FOOD PROCESSING

**Disclaimer:** The content in the profile is being vetted by the department and is liable to change





## WELCOME!

In Uttarakhand, we have been successful in creating an investor friendly environment. The State has immense potential and favourable conditions to attract investments in various sectors mainly Tourism & Wellness, Organic Farming, Food Processing, Horticulture, Electricity, Solar Energy, Automobile, Pharmaceutical & Sericulture sectors. Uttarakhand is also welcoming new ideas and innovations by creating appropriate ecosystem for nurturing Start-Ups. The state has done a commendable job in creating a symbiotic atmosphere of confidence and enterprise.

Uttarakhand beckons all investors to come, invest and excel.

**Trivendra Singh Rawat**  
Chief Minister, Uttarakhand





# CONTENTS

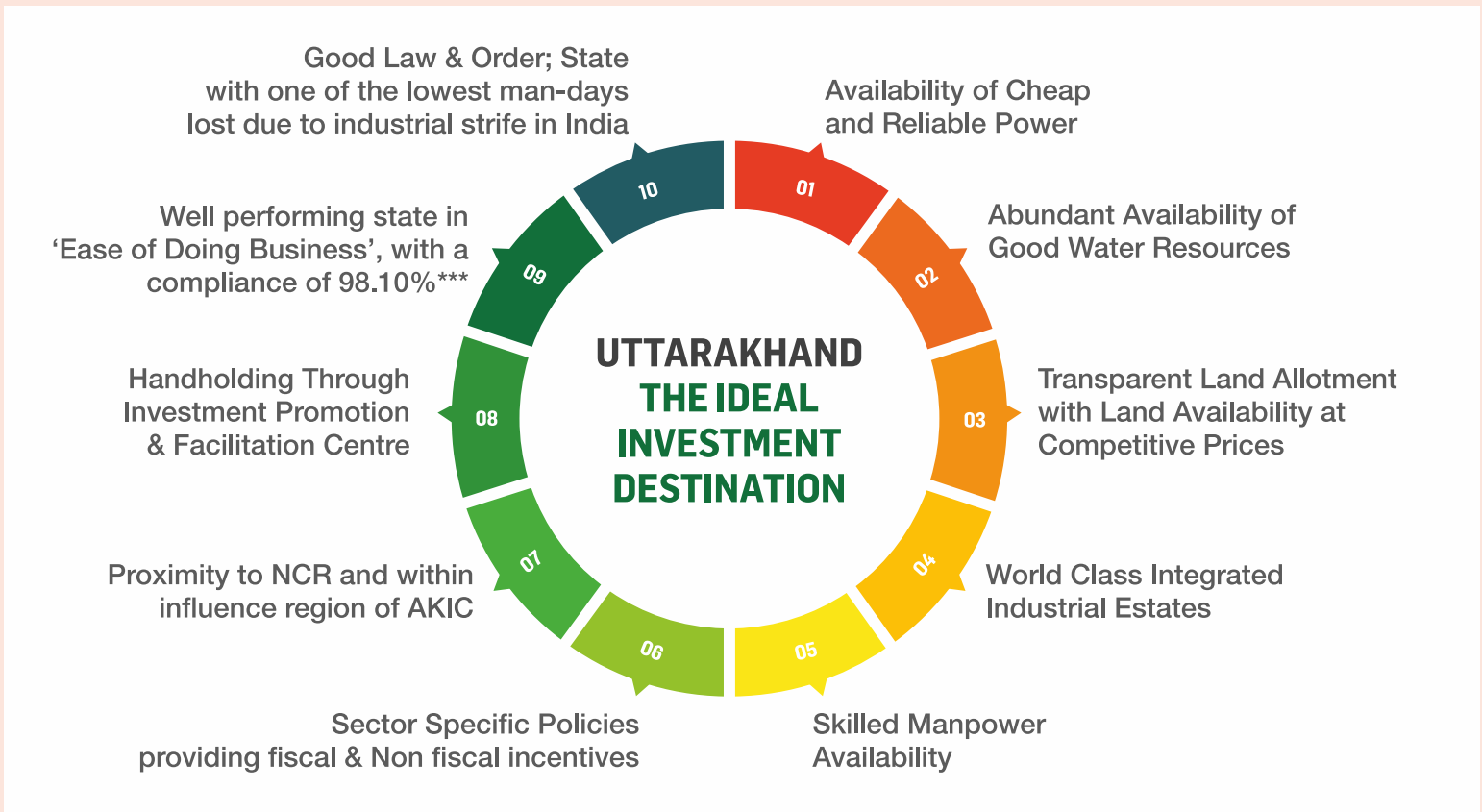
01	Uttarakhand overview
06	Food processing scenario in India
11	Key Credentials of the State
16	Regulatory mechanism: Registration/ NOCs/ licenses required for setting up of units
19	Policies, schemes and incentives
30	State incentives applicable for Food processing industries
35	Resource profile of Uttarakhand
38	Food processing clusters in Uttarakhand
39	Cold chain projects in Uttarakhand
41	Potential investible projects
42	Departmental contact details



# UTTARAKHAND OVERVIEW (1/4)

- The State of Uttarakhand was formed on 9th November 2000 as the 27th State of India, when it was carved out of northern Uttar Pradesh
- The State is close to the National Capital Region (NCR) and has excellent connectivity with its neighbouring states
- With levels of literacy rate\* (78.80%) higher than the national average and the presence of institutes of international repute, the State has abundant availability of quality human resources
- GSDP of the state stood at INR 2,17,609 Million with a growth rate of 11.23% (FY 2017-18)\*
- The state offers a wide range of benefits in terms of interest incentives, financial assistance, subsidies and concessions
- The secondary sector in the state contributes around 50% to the Gross State Domestic Product (GSDP: 2017-18), much higher than the national average\*\*

## Acknowledged for Ease of Doing Business & Peace of Doing Business...



Sources: \*Uttarakhand at a glance 2016, DES, GoUK  
\*\*Directorate of Economics & Statistics, GoUK, \*\*\* Evaluation of BRAP 2017 Reform Evidence, DIPP

# UTTARAKHAND OVERVIEW (2/4)



General Characteristics	Population ('000) 10086	Area (Sq. Km) 53,483	Water bodies Ganga, Yamuna, Bhagirathi and others
Economic Indicators	GSDP (Million INR) 2,17,609 (FY 2017-18)	GSDP Growth Rate 11.23% (FY 2017-18)	Per Capita Income (INR) 1,77,356 (FY 2017-18)
Technical Institutes	Higher Education Institutes 159	Industrial Training Institutes (ITI) 179	Polytechnic Institutes 70

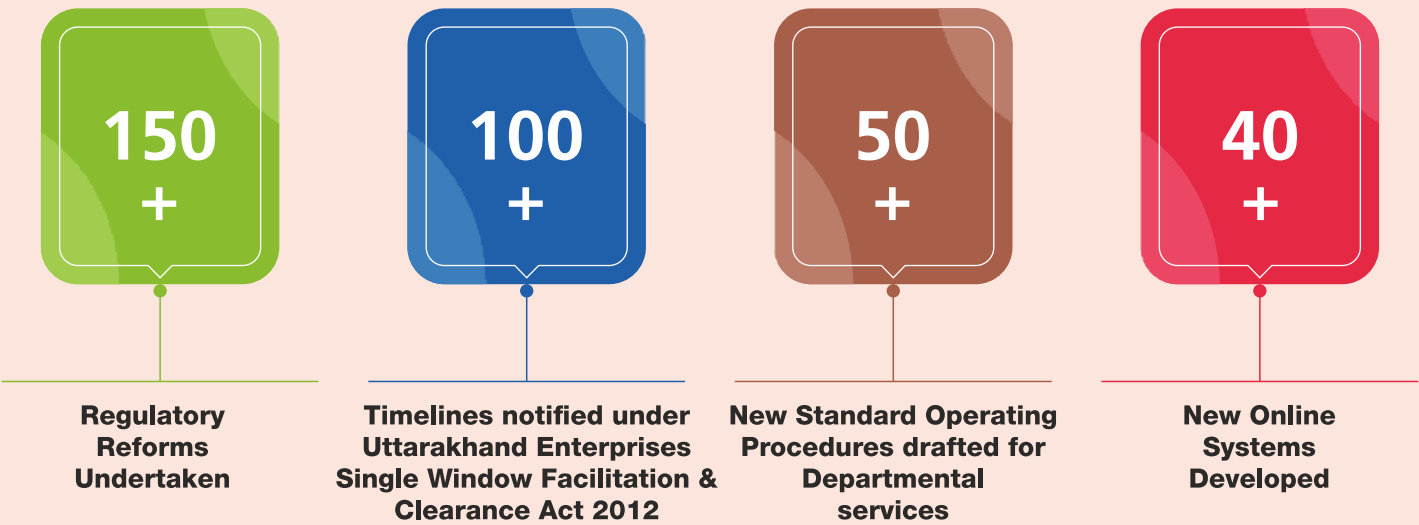
Sources: Uttarakhand at a glance 2016, DES, GoUK



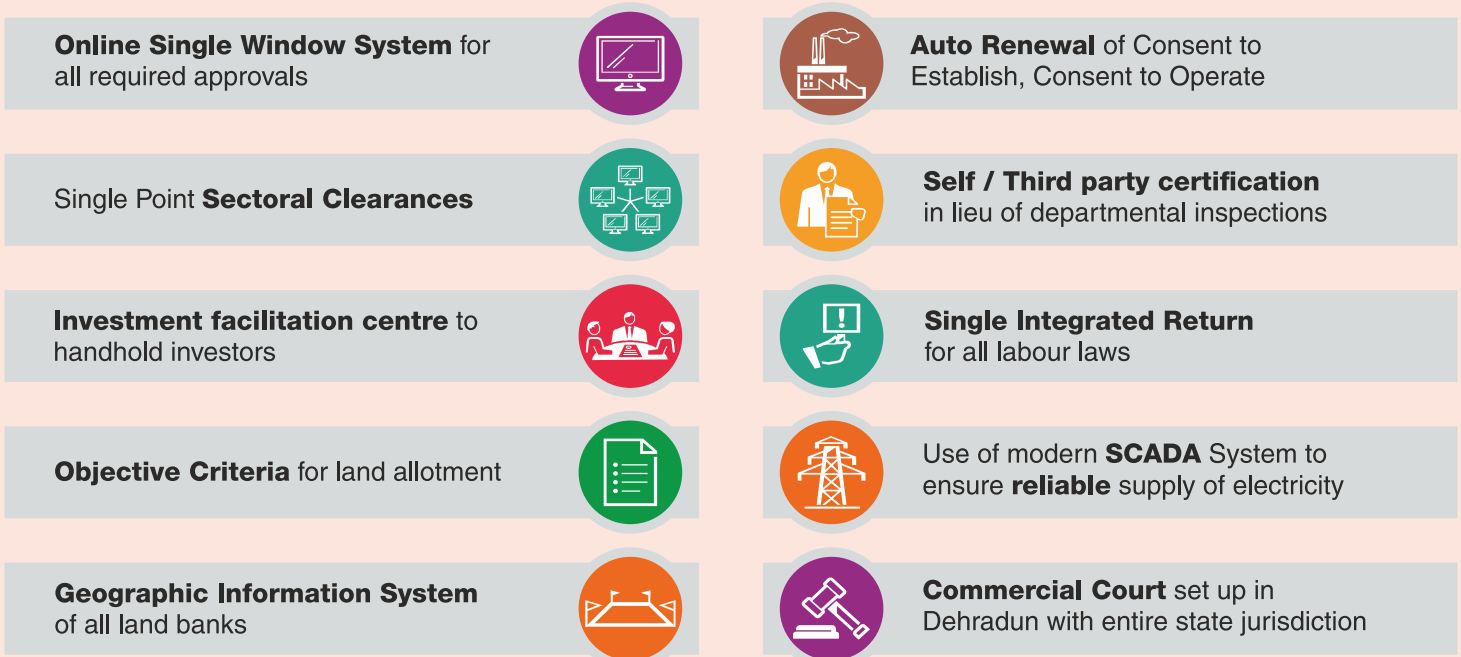


# UTTARAKHAND OVERVIEW (3/4)

Under the ‘Ease of Doing Business’ initiative, the State has implemented a web based Single Window Clearance System - [www.investuttarakhand.com](http://www.investuttarakhand.com), allowing investors to avail the necessary State Government approvals to establish and start their business operations through a single platform without any physical touch point with the approving / licensing authority.



## Hassle Free Setup and Operations in the State

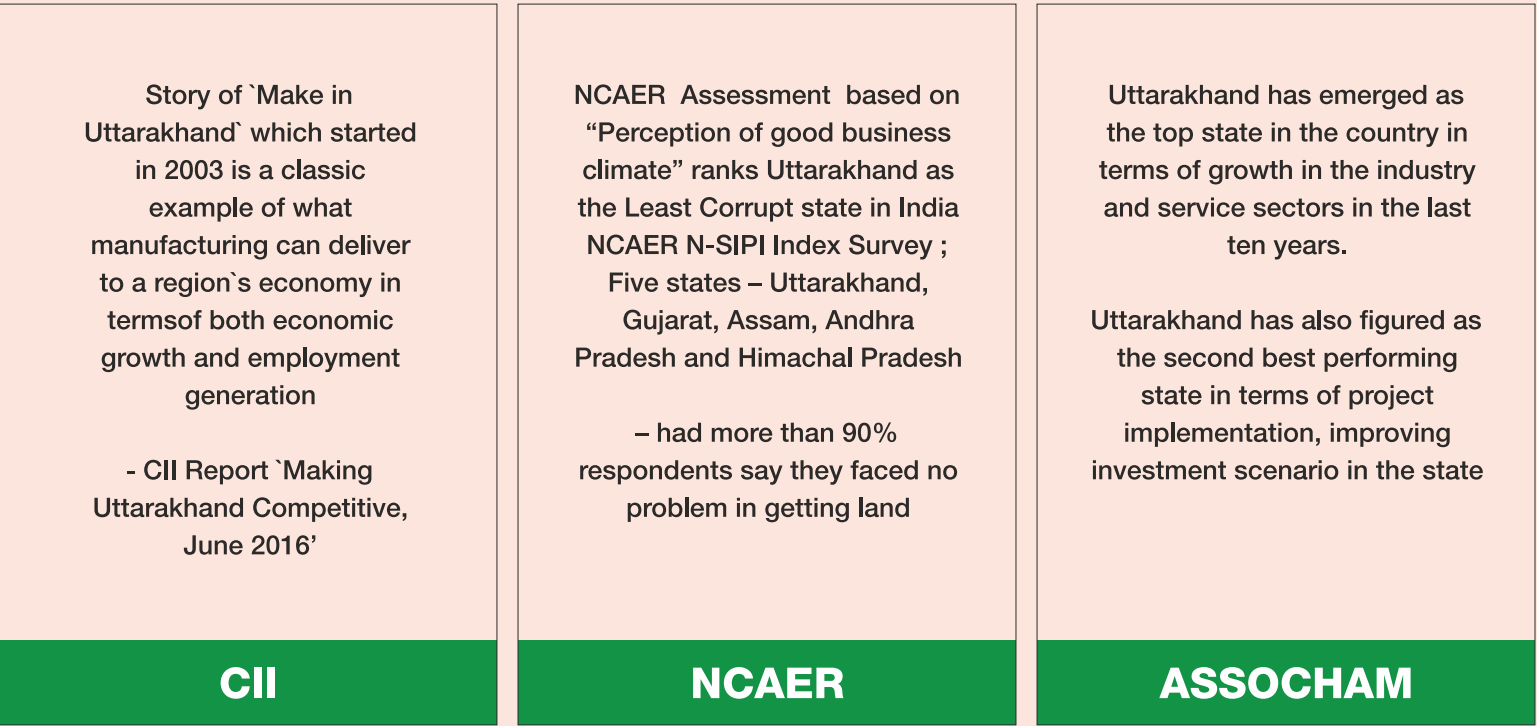


# UTTARAKHAND OVERVIEW (4/4)

## Investor Facilitation

- The Government of Uttarakhand has laid huge emphasis on business facilitation by creating an enabling environment for industries to set up and start their operations in the State
- The State government houses a dedicated ‘*Investment Promotion & Facilitation Centre (IPFC)*’ which acts as a centralized one-stop-shop for the investors / businesses and provides complete handholding support in a structured, focused and comprehensive manner. IFC will focus on investment promotion, facilitation, direct engagement and consultation with investors / Stakeholders and ensures investment realization and sustainable industrialization in the state
- ‘*Uttarakhand Right to Service Act, 2011*’ & ‘*The Uttarakhand Enterprises Single Window Facilitation and Clearance Act, 2012*’ were enacted to provide necessary time bound licenses, permissions and approvals for the setting up of commercial establishments in the state. The State has ensured robust legal resolution mechanisms to ensure time bound delivery of government services with more than 100 investor related services already notified under both the acts separately and is in the process of adding more such services of multiple sectors shortly

## Credited by Industry Associations



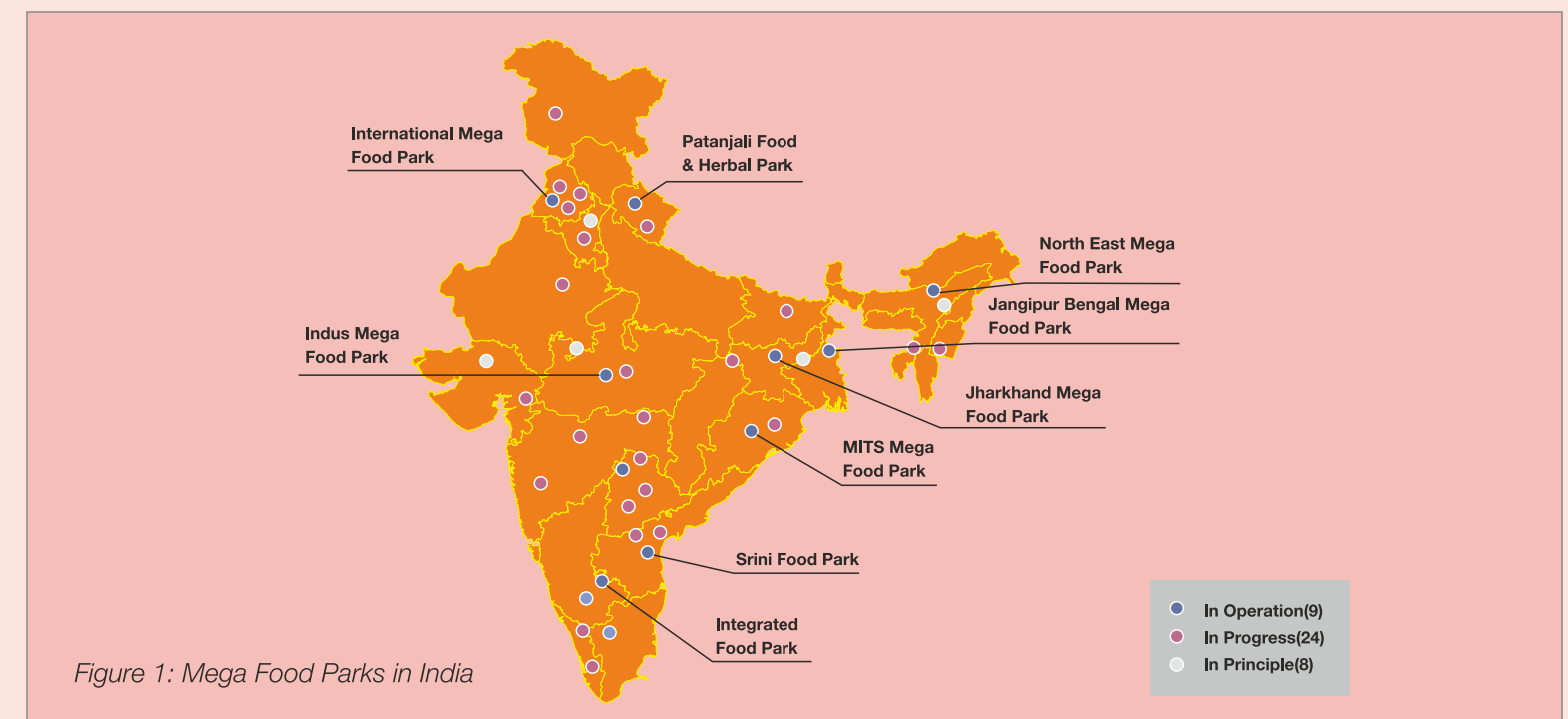




## ! FOOD PROCESSING SCENARIO IN INDIA (1/4)

### India Food Processing sector

- The Food processing sector, valued at USD 322 billion in 2016 is considered as one of the sunrise sectors in India. It is expected to grow to USD 543 billion by 2020 at a CAGR of 14.6%
- Globally, India ranks 2nd, next only to China, in total food production\*
- India ranks 1st in the World in production of Milk, Bananas, Mango, Guava, Papaya, Ginger and Okra\*
- India ranks 2nd in the World in production of Green peas, Potato, Tea, Tomato, Sesame Seed and many other key commodities\*
- India is also amongst the top 10 countries in the world in terms of land area under organic agriculture. The country produced around 1.35 million MT of certified organic products (2015-16)\*
- India's 60 Agri-Export Zones, 34 million MT of Cold Storage capacity, 41 Mega Food Parks and 228 cold chain projects approved by Ministry of Food Processing Industries (MoFPI) paves a way for exploring huge opportunities in the sector\*



- The major food categories and their share in the food processing sector are as follows#:
  - Dry food grocery: 34.7%
  - Milk & dairy products: 16%
  - Fresh produce: 15.6%
  - Perishables: 8%
  - Spices: 6%
  - Others: 19.7%

\* <http://foodprocessingindia.co.in>

# <http://www.investindia.gov.in/sector/food-processing>



## FOOD PROCESSING SCENARIO IN INDIA (2/4)

- India's exports of processed food was USD 4.19 billion in 2016-17. Total agricultural exports from India grew at a CAGR of 19% over FY 2010-16 to reach USD 32.08 billion in FY16.
- This sector has a total of 38,603 registered units with fixed capital of USD 29.7 billion, around 1.77 million persons engaged and aggregate output of around USD 144.6 billion.

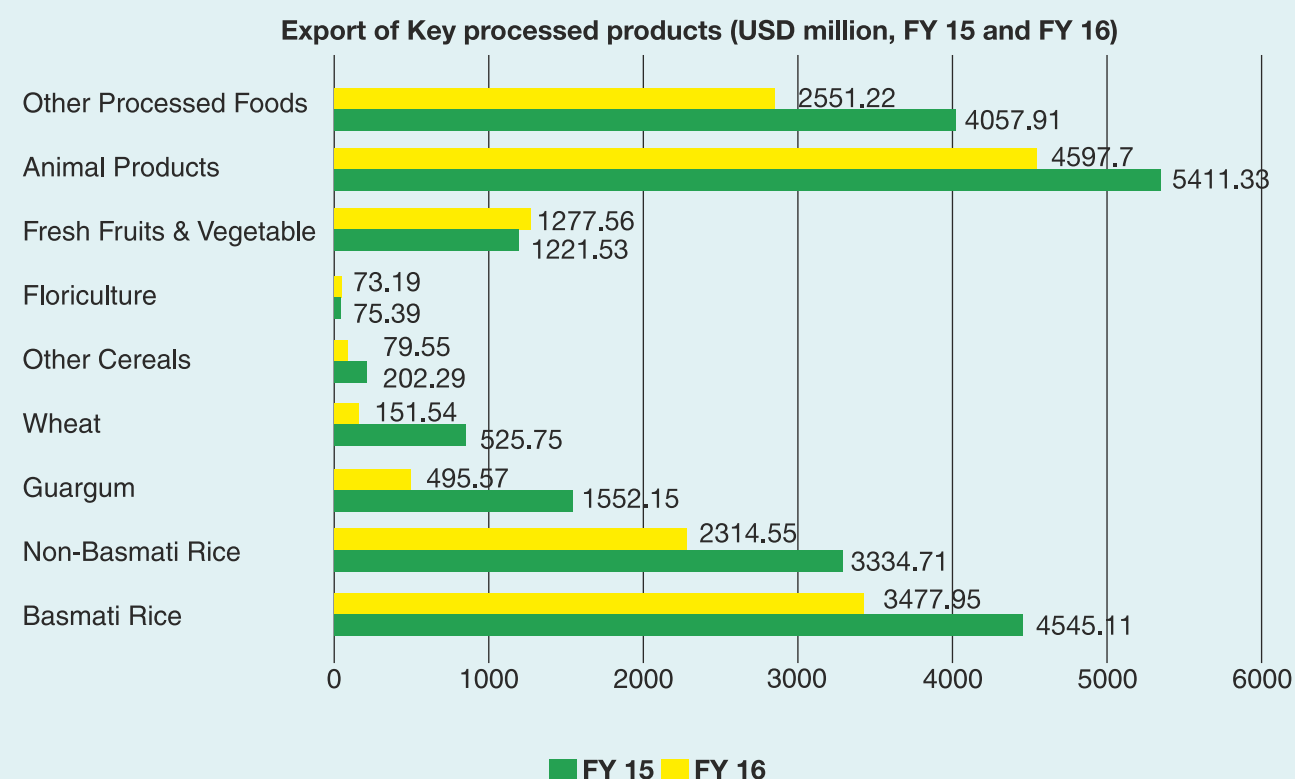


Figure 2: Export of Key processed products

- Government of India allows 100% FDI under the automatic route in food processing industries. FDI inflow in the sector from April 2000 to December 2017 was USD 8,364.91 million

Source: [http://dipp.nic.in/sites/default/files/FDI\\_FactSheet\\_21February2018.pdf](http://dipp.nic.in/sites/default/files/FDI_FactSheet_21February2018.pdf)  
[http://apeda.gov.in/apedawebsite/six\\_head\\_product/PFV\\_OPF.htm#](http://apeda.gov.in/apedawebsite/six_head_product/PFV_OPF.htm#)

## FOOD PROCESSING SCENARIO IN INDIA (3/4)

### FDI regulations for Food Processing sector

#### Manufacturing sector

- 100% FDI is permitted for the manufacturing sector under the automatic route.
- A manufacturer is also permitted to sell its products manufactured in India through wholesale, retail or e-commerce activities.
- FDI provisions applicable to the retail trading sector, 100% FDI under the approval route is permitted for food products manufactured or produced in India

#### Agriculture Sector

- 100% FDI is permitted, under the automatic route for the following activities:
  - Floriculture, horticulture, apiculture and cultivation of vegetables and mushrooms under controlled conditions (ie where climatic and related conditions are controlled artificially)
  - Development and production of seeds and planting material
  - Services related to agro and allied sectors

#### Plantation Sector

- 100% FDI is permitted, under the automatic route for the following plantations:
  - Tea and coffee
  - Rubber
  - Cardamom
  - Palm oil and olive oil

#### Single-Brand Retail Trading (SBRT)

- Up to 100% FDI is now permitted for companies looking to undertake SBRT in India :
  - FDI up to 49% is permitted under the automatic route
  - FDI beyond 49% (and upto 100%) is permitted under the approval route
  - Where FDI in SBRT exceeds 51%, mandatory local sourcing norms would be applicable
  - SBRT entities operating through brick and mortar stores would also be permitted under retail trading through e-commerce activities
  - Products sold should be of a single brand only

Source – <http://foodprocessingindia.co.in/publishing/publications/17c4292aa27450f14bc2FDI.pdf>





## ! FOOD PROCESSING SCENARIO IN INDIA (4/4)

### FDI regulations for Food processing sector

#### Multi-Brand Retail Trading

- FDI up to 51% is permitted under the government approval route
- The minimum amount required to be brought in as FDI for MBRT would be USD 100m
- At least 50% of the first tranche of USD 100m is required to be invested in 'back-end infrastructure' within 3 years
- Entities having FDI, and engaged in MBRT activities, would not be permitted to engage in trading vide e-commerce

#### Wholesale trading

- FDI upto 100% is permitted for wholesale cash and carry trading, under the automatic route
- Wholesale trade of goods would be permitted to companies of the same group, but the same should not exceed 25% of the total revenue earned by the wholesale venture
- Wholesale entities would also be permitted to undertake SBRT

#### E-Commerce

- FDI upto 100% is permitted for e-commerce activities under the automatic route
- FDI in e-commerce is only permitted for a marketplace model of e-commerce, and not for an inventory-based model
- A market-place model refers to a e-commerce entity providing an IT platform on a digital/ electronic platform to act as a facilitator between buyers and sellers
- Not more than 25% of total sales (during a given financial year) affected through an e-commerce marketplace should be from one vendor or its group companies

Source – <http://foodprocessingindia.co.in/publishing/publications/17c4292aa27450f14bc2FDI.pdf>



# KEY CREDENTIALS OF THE STATE (1/3)

- Uttarakhand's favourable agro-climatic conditions with 4 agro-climatic zones enables cultivation of a multitude of crops, vegetables and fruits round the year
- Uttarakhand has become a leading fruit cultivating State of India
- It is ranked No. 1 in production of Peaches and Plums, ranked No. 2 in production of Walnuts and Pears and ranked No. 3 in Apple Cultivation amongst all Indian States (2015-2016)
- A total of 125 major food processing units (which include all the segments of food) have been established in the State out of which 52 units are Horticulture based and supported under MIDH Scheme



Districts of Uttarakhand

- |                  |                  |                       |              |
|------------------|------------------|-----------------------|--------------|
| 1. Uttarkashi    | 5. Dehradun      | 9. Almora             | 13. Haridwar |
| 2. Chamoli       | 6. Pauri Garhwal | 10. Champawat         |              |
| 3. Rudrapur      | 7. Pithoragarh   | 11. Nainital          |              |
| 4. Tehri Garhwal | 8. Bageshwar     | 12. Udham Singh Nagar |              |

## Following are some of the major players present in the State:

Unit	Description
Britannia Industries Limited	Established in 1892, is one of the leading food product companies, with an estimated 38 percent market share with its plant at Pantnagar
Nestle India Limited	Nestle, the world's largest and most diversified food company established its seventh factory in Uttarakhand
Pepsi	Established in 1893 it has its company owned bottling plant in Udham Singh Nagar, Uttarakhand
KLA India Public Limited	KLA India Public Limited is one known brand when it comes to international trading with its rice processing unit at Rudrapur, Uttarakhand





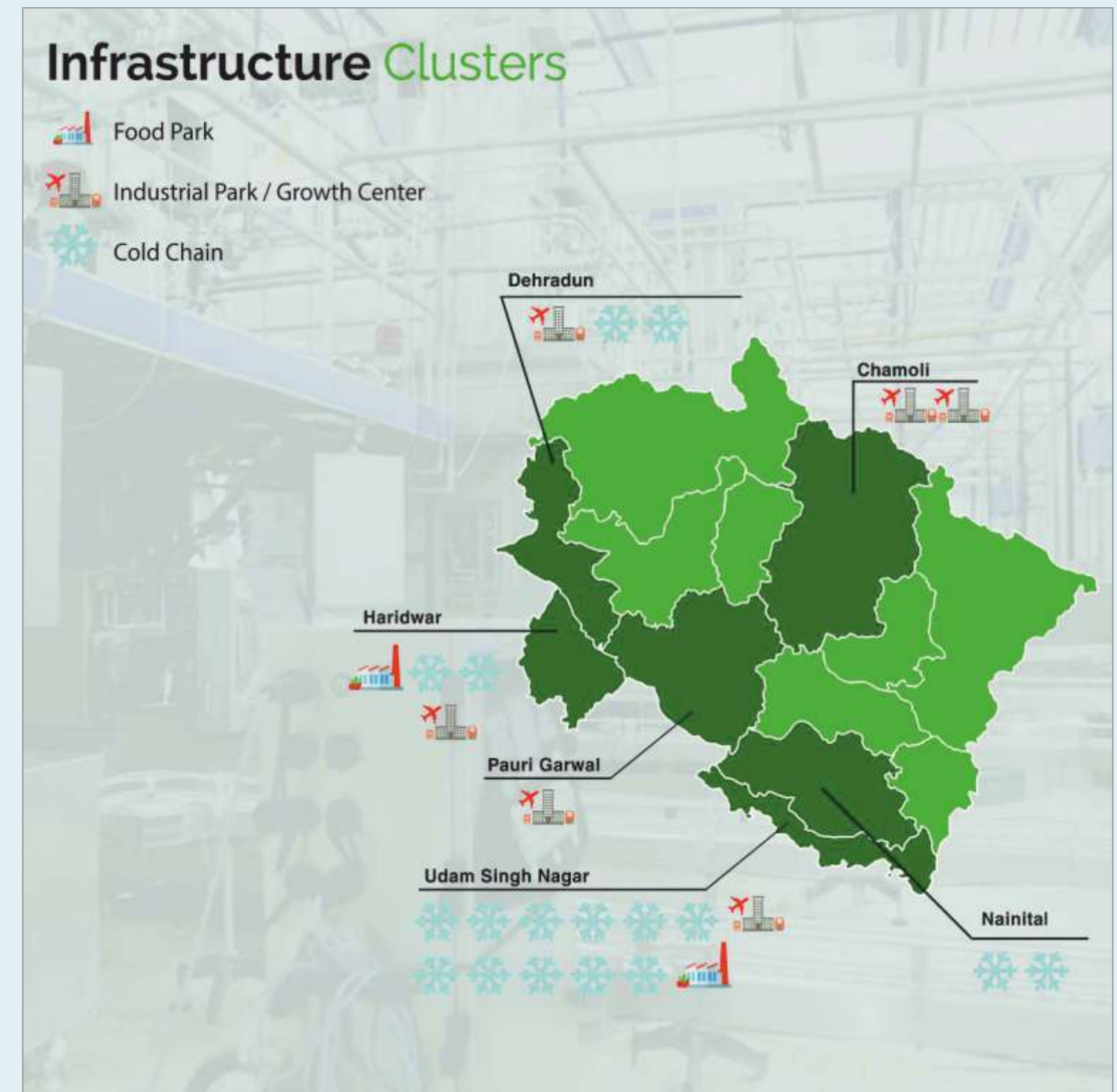
## KEY CREDENTIALS OF THE STATE (2/3)

### Mega Food Park

- The State houses several agriculture universities and institutions, such as G.B. Pant, University of Agriculture & Technology, Pant Nagar (U.S. Nagar), Uttarakhand, University of Horticulture and Forestry, Bharsar (Pauri), etc. which provide degree courses in Food Technology
- The State also runs two Government food science training centres (one in Ramnagar, Nainital (District) and other in Kotdwar, Pauri (District)) which provide under graduate Diploma courses in three trades of food processing, 49 Government Food Preservation cum Training Centres, a Bee Keeping Training Centre at Jeolikote, Nainital (District), a Mushroom Training Centre at Jeolikote, Nainital (District)
- Apart from this, 'The Uttarakhand Skill Development Mission' trains students for employment in the Food Processing Sector
- Uttarakhand has robust Infrastructure available in the State, including two Mega Food Parks and six Industrial Parks / Growth Centres



<http://foodprocessingindia.co.in/status-of-uttarakhand-s-food-processing-industry-uttarakhand.html>





# KEY CREDENTIALS OF THE STATE (3/3)

## Mega Food Park (Patanjali Food & Herbal Park Ltd.)

- The project is being built at a cost of approximately INR 950 million
- The Central Processing Centre (CPC) is spread over 70 acres
- Primary Processing Centres (PPC) to feed processing activities at the CPC are being set up at Lal Tappar, Kotdwar, Daudpur, Haji, Budhana, Devprayag and Bazpur
- The project possesses state-of-the-art processing infrastructure like cold storage, Tetra Pack, warehousing, ripening chambers, sorting and grading line, IQF (Individually Quick Frozen), grain milling and world-class quality testing laboratory among others
- At present 17 processing units are functioning in the park, providing employment to over 5000 people directly or indirectly
- These units are engaged in the production of candy, juice, murabba, flour, spices. State-of-the-art packaging facilities are also available to these units
- The cumulative turnover of these industries is over INR 2.5 billion annually

## Himalayan Mega Food Park

- Himalayan Mega Food Park is spread in an area of 50 acres land
- The project includes 1 Central Processing Centre, 3 Primary Processing Centres & multiple Collection Centres
- The Primary Processing Centres will be located in Ramgarh, Ramnagar (Mohan) and Kaladhungi and the 10 Collection Centres will be located with in a maximum distance of 80 km from the PPC
- The Collection Centre will have the following facilities: Steam Generation & Distribution System, Power Transmission & Distribution (including DG set for power backup), Effluent Treatment Plant, Fire Hydrant System, Water Treatment & Supply System, Sewerage Treatment System & Sewerage Network, Integrated Solid Waste Management, Storm Water Drainage System, Telecommunications & IT System, Weighbridges, Street Lighting System, Road Network, Compound Wall & Landscaping
- Other facilities: (a) Administrative Building (b) Guest House (c) Staff Quarters (d) Canteen (e) Crèche (f) Labours' Dormitory (g) Security / Gate Office / Drivers' Room

<http://www.himalayanfoodpark.com/>

# REGULATORY MECHANISM: REGISTRATION / NOCs / LICENSES REQUIRED FOR SETTING UP OF UNITS

Details of State Level Licenses / Approvals / NOCs / Clearances specific to Food Processing Industries				
S. No	Name of Service	Authority/ Agency/ Office/ Department officer granting approval	Type of Requirement (Setting up of Business / Starting Operations)	Approval Timeline
1	License for Cold Storage	Director Horticulture & Food Processing Uttarakhand	Starting Operations	60 Days
2	Renewal of License for Cold Storage	Director Horticulture & Food Processing Uttarakhand	Post-Operations	60 Days
3	Registration under FSSAI under FSSAI Act, 2006, regulation 2011	FSSAI, Department of Medical Health & Family Welfare	Starting Operations	30 Days
4	License under FSSAI under FSSAI Act, 2006, regulation 2011	FSSAI, Department of Medical Health & Family Welfare	Starting Operations	60 Days
5	Land allotment in departmental industrial estates	Directorate of Industries	Starting Operations	15 Days
6	Application for Land / Plot Allotment	SIIDCUL	Setting up of Business	15 Days
7	Application for new connection LT / HT line – non domestic / industrial	Uttarakhand Power Corporation Limited	Setting up of Business	7 Days
8	Application for Water Connection	State Infrastructure and Industrial Development Corporation of Uttarakhand Limited	Setting up of Business	15 Days
9	Application for Water Connection	Uttarakhand Jal Sansthan	Setting up of Business	15 Days



# REGULATORY MECHANISM: REGISTRATION / NOCs / LICENSES REQUIRED FOR SETTING UP OF UNITS

Details of State Level Licenses / Approvals / NOCs / Clearances specific to Food Processing Industries				
S. No	Name of Service	Authority/ Agency/ Office/ Depart-ment officer granting approval	Type of Requirement (Setting up of Business / Starting Operations)	Approval Timeline
10	License under Contract Labour Act, (Regulation and Abolition), 1970	Department of Labour	Starting Operations	30 Days
11	Registration under GST (Uttarakhand Goods and Services Tax Rules, 2017)	Department of Commercial Tax	Starting Operations	3 Days
12	Application for building plan approval	State Industrial Development Authority	Setting up of Business	30 Days
13	Application for Completion cum Occupancy Certificate	State Industrial Development Authority	Setting up of Business	15 Days
14	Consent to Establish under Water (Prevention and Control of Pollution) Act, 1974	Uttarakhand Environment Protection and Pollution Control Board	Setting up of Business	30 days - Green Category 60 days - Orange Category 90 days - Red Category
15	Consent to Establish under Air (Prevention and Control of Pollution) Act, 1981	Uttarakhand Environment Protection and Pollution Control Board	Setting up of Business	30 days - Green Category 60 days - Orange Category 90 days - Red Category

Details of State Level Licenses / Approvals / NOCs / Clearances specific to Food Processing Industries				
S. No	Name of Service	Authority/ Agency/ Office/ Depart-ment officer granting approval	Type of Requirement (Setting up of Business / Starting Operations)	Approval Timeline
16	Consolidated Consent & Authorization under Water Act, 1974, Air Act, 1981 & Authorization under The Hazardous and Other Wastes (Management and Transboundary Movement) Rules, 2016	Uttarakhand Environment Protection and Pollution Control Board	Starting Operations	30 days - Green Category 60 days - Orange Category 90 days - Red Category
17	Application for Pre-Establishment Fire NOC (National Building Code, 2005)	Uttarakhand Fire and Emergency Services	Setting up of Business	15 Days
18	Application for Pre-Operational Fire NOC(National Building Code, 2005)	Uttarakhand Fire and Emergency Services	Starting Operations	30 Days
19	Site Plan Approval under Factories Act, 1948	Department of Labour	Setting up of Business	30 Days
20	Registration of Factories under Factories Act, 1948	Department of Labour	Starting Operations	30 Days
21	Registration under Uttarakhand Dookan Aur Vanijya Adhistan Adhiniyam, 1962	Department of Labour	Starting Operations	1 Day



# ! POLICIES, SCHEMES AND INCENTIVES

## Central Government Schemes and Policies

- Pradhan Mantri Kisan Sampada Yojana
  - Mega Food Parks
  - Integrated Cold Chain and Value Addition Infrastructure
  - Creation / Expansion of Food Processing & Preservation Capacities
  - Infrastructure for Agro-processing Clusters
  - Creation of Backward and Forward Linkages
  - Food Safety and Quality Assurance Infrastructure
  - Human Resources and Institutions
- Dairy Processing & Infrastructure Development Fund
- Capital Investment subsidy scheme for construction/expansion/ modernization of cold storage and storages for Horticulture Products
- Horticulture Mission for North East & Himalayan States
- Integrated Scheme for Agricultural Marketing (ISAM) of SFAC
- Agriculture Export Promotion Plan Scheme of APEDA
- Credit Linked Capital Subsidy Scheme (CLCSS) of Ministry of MSME
- Venture Capital Assistance Scheme of SFAC
- A Scheme for Promotion of Innovation, Rural Industry and Entrepreneurship (ASPIRE)
- Pradhan Mantri Kaushal Vikas Yojana (PMKVY)

## State Government Schemes and Policies

- State Government policies & schemes that are currently running include MSME Policy 2015, Mega Industrial & Investment Policy, 2015 and Mega Food Park Supporting Scheme.



## Central Government Incentives

S. No	Scheme	Incentive Type	Pattern of Assistance
Scheme under SAMPADA			
1	Mega Food Park Scheme	One time Capital Grant	75% of the project cost (excluding land cost) subject to a ceiling of INR 50 crore
2	Integrated Cold Chain & Value Addition Scheme	Grant-in-Aid for Storage Infrastructure, including Pack House and Pre cooling unit, ripening chamber and transport infrastructure	50% of the total cost of plant & machinery and technical civil works (maximum of INR 10 crore per project)
		Grant-in-Aid for value addition and processing infrastructure including frozen storage/ deep freezers associated and integral to the processing	75% for North East States, Himalayan States, ITDP Areas & Islands(maximum of INR 10 crore per project)
		Grant-in-Aid for irradiation facilities	75% for North East States, Himalayan States, ITDP Areas & Islands(maximum of INR 10 crore per project)
3	Scheme for Creation/ Expansion of Food Processing & Preservation Capacities	Grant-in-Aid	50% of the eligible project cost subject to a maximum of INR 5 crores
4	Scheme for Infrastructure for Agro-processing Clusters	Grant-in-Aid	50% of eligible project cost subject to maximum of INR 10 crores
5	Scheme for Creation of Backward and Forward Linkages	Grant-in-Aid	50% of the eligible project cost, subject to maximum of INR 5 crore per project (the grant is provided only in respect of technical civil work and eligible plant & machinery)
6	Scheme for Food Safety & Quality Assurance Infrastructure	Grant-in-Aid for HACCP/ ISO Standards/Food Safety/Quality Management Systems	Re-imbursement of expenditure towards implementation of HACCP/ ISO Standards/ Food safety/ Quality Management Systems @ 75% of eligible project cost subject to maximum of INR 22 lakhs



Central Government Incentives			
S. No	Scheme	Incentive Type	Pattern of Assistance
Scheme under SAMPADA			
6	Scheme for Food Safety & Quality Assurance Infrastructure	Grant-in-Aid for Setting Up/Up-gradation of Quality Control/Food Testing Laboratories	<p>Central/State Govt. and its organizations /universities (including Govt. owned deemed universities) are eligible for grant-in-aid of entire cost of laboratory equipment and 33% of the cost of technical civil work to house the equipment and furniture and fixtures associated with the equipment</p> <p>They are also eligible for 80% of the monthly emoluments of two technical staff for two years from the date of completion of the laboratory.</p>
7	Scheme for Human Resources and Institutions	Grant-in-Aid for Research and Development	<p>For the Government organizations/ universities/institutions: 100% of cost of equipment, consumables and expenditure related to salaries for project staff specific to the project for maximum of 3 years</p> <p>For Private organizations / universities / institutions: 70% of equipment cost only</p> <p>Ministry's sponsored projects: 100% Grant only to public funded organizations of repute for cutting edge areas of research leading to development of innovative products, processes, manufacturing practices and technology.</p>
		Grant-in-Aid for Promotional Activities	<p>For organizing all India level seminars, workshops, fairs and exhibitions for food processing sector, grant in aid is extended @ 50% of the cost of the event or maximum INR 5 lakhs.</p>

S. No	Scheme	Incentive Type	Pattern of Assistance
Scheme under SAMPADA			
7	Scheme for Human Resources and Institutions	Grant-in-Aid for Skill Development	<p>Up to maximum of INR 5 lakh per Qualification Pack (QP) for development of training module both in print and Multimedia for each job role</p> <p>Maximum of INR 0.50 lakh per QP would be provided for the translation of already developed training modules in recognized regional Language as per 8th schedule both in print and Multimedia for each job role.</p> <p><b>Assistance for creation of infrastructure facilities for Skill Training Centers:</b></p> <p>50% of cost of plant &amp; machineries required for a National Skill Qualifications Framework (NSQF) validated training module subject to maximum of INR 15 lakh per training module and limited to maximum two training modules per TC.</p>







# ! POLICIES, SCHEMES AND INCENTIVES

Other Schemes			
S. No	Scheme	Incentive Type	Pattern of Assistance
8	Dairy Processing & Infrastructure Development Fund	Interest Subsidy	Funding support under the scheme will be in the form of interest bearing loan: Loan Component – 80% (maximum) End Borrower's Contribution - 20% (minimum) Tenure of loan would be a maximum of 10 Years, from the date of the 1st release, including moratorium period of a maximum 2 years on repayment of principal only Rate of interest to End Borrowers would be 6.5% per annum.
9	Capital Investment subsidy scheme for construction/ expansion/modernization of cold storage and storages for Horticulture Products	Credit linked back-ended subsidy for Cold Storage Unit Type 2 - with multiple temperature zones and basic material handling equipment	NHB to take up projects with Capacity above 5000 MT up to 10000 MT as per following rates. @ INR 10000/ MT for capacity up to 5000 MT @ INR 9500/ MT for capacity between 5001 to 6500 MT @ INR 9000/MT for capacity between 6501 to 8000 MT @ INR 8500/MT for capacity between 8001 to 10000 MT Credit linked back-ended subsidy @ 50% of the cost of project for capacity above 5000 MT
		Credit linked back-ended subsidy for Cold Storage Units Type 2 with add on technology for Controlled Atmosphere	NHB to take up projects with Capacity above 5000MT up to 10000MT as per Type 2 rates given above. Additional INR 10,000/ MT for add on components of controlled atmosphere technology Credit linked back-ended subsidy @50% of the cost of project for capacity above 5000 MT
		Credit linked back-ended subsidy for Technology induction and modernization of cold-chain	Credit linked back-ended subsidy @50% of the cost of project for capacity above 5000 MT (Max Rs 500.00 Lakh @ INR 5000/MT for maximum capacity of 10000 MT)
		Credit linked back-ended subsidy for Refrigerated Transport vehicles	Credit linked back-ended subsidy @50% of cost (INR 30 lakh for 15 MT, and prorate basis for capacities between 9 to 15 MT (3 cubic meters (cum) (104 cubic feet (cft). of chamber volume shall be equivalent of 1 MT of storage capacity)



! POLICIES, SCHEMES AND INCENTIVES

Other Schemes

S. No	Component	Item	Cost Norms	Pattern of Assistance
10	Horticulture Mission for North East & Himalayan States (Integratepost harvest management)	1. Pack House (on field collection and grading centre)	Rs. 4 lakh/ unit with size of 9 M X 6 M	50% of capital cost (maximum up to 2 lakh)
		2. Integrated pack house with facilities for conveyer belt, sorting, grading units, washing, drying and weighing	Rs. 50 lakh/ unit with size of 9MX18M	Credit linked back-ended subsidy @ 35% (maximum INR 17.5 lakh) of the cost of project in general areas and 50% (maximum INR 25 lakh) of cost in case Hilly & Scheduled areas for individual entrepreneurs
		3. Pre-cooling unit	Rs. 25 lakh/ unit with capacity of 6MT	Credit linked back-ended subsidy @ 35% (maximum INR 8.75 lakh) of the cost of project in general areas and 50% (maximum INR 12.5 lakh) of cost in case Hilly & Scheduled areas for individual entrepreneurs
		4. Cold room (staging)	Rs. 15 lakh/ unit with capacity of 30MT	Credit linked back-ended subsidy @ 35% (maximum INR 5.25 lakh) of the cost of project in general areas and 50% (maximum INR 7.5 lakh) of cost in case Hilly & Scheduled areas, per beneficiary
		5. Mobile pre-cooling unit	Rs. 25 lakh	Credit linked back-ended subsidy @ 35% (maximum INR 8.75 lakh) of the cost of project in general areas and 50% (maximum INR 12.5 lakh) of cost in case Hilly & Scheduled areas, per beneficiary
		6. Cold Storage (Construction, Expansion and Modernisation)	Rs. 8000/ MT (max 5000 MT capacity)	Credit linked back-ended subsidy @ 35% (maximum INR 1.4 crore) of the cost of project in general areas and 50% (maximum INR 2 crore) of cost in case Hilly & Scheduled areas, per beneficiary
		i) Cold storage units Type 1 – basic mezzanine structure with large chamber (of >250 MT) type with single temperature zone		

S. No	Component	Item	Cost Norms	Pattern of Assistance
10	Horticulture Mission for North East & Himalayan States (Integratepost harvest management)	ii) Cold storage unit type 2 – PEB structure for multiple temperature and product use, more than 6 chambers (of < 250 MT) and basic material handling equipment	Rs. 10000/ MT (max 5000 MT capacity)	Credit linked back-ended subsidy @ 35% (maximum INR 1.75 crore) of the cost of project in general areas and 50% (maximum INR 2.5 crore) of cost in case Hilly & Scheduled areas, per beneficiary
		iii) Cold storage units type 2 with add on technology for controlled atmosphere	Additional Rs 10000/ MT for add on components of controlled atmosphere technology.	Credit linked back-ended subsidy @ 35% (maximum INR 1.75 crore) of the cost of project in general areas and 50% (maximum INR 2.5 crore) of cost in case Hilly & Scheduled areas, per beneficiary
		7. Technology induction and modernisation of cold-chain	Max INR 250 lakh for modernization of PLC equipment, packaging lines, dock levellers, advanced graders, alternate technologies, stacking systems, modernization of insulation and refrigeration, etc	Credit linked back-ended subsidy @35% (maximum INR 87.5 lakh) of the cost of project in general areas and 50% (maximum INR 125 lakh) of cost in case of Hilly & Scheduled areas, per beneficiary
		8. Refrigerated transport vehicles	Rs. 26 lakh for 9 MT (NHM & HMNEH) and prorata basis for lesser capacity but not below 4 MT	Credit linked back-ended subsidy @35% (maximum INR 9.1 lakh) of the cost of project in general areas and 50% (maximum INR 13 lakh) of cost in case of Hilly & Scheduled areas, per beneficiary
		9. Primary/ Mobile/ Minimal processing unit	Rs. 25 lakh/ unit	Credit linked back-ended subsidy @40% (maximum INR 10 lakh) of the capital cost of project in general areas and 55% (maximum INR 13.75 lakh) in case of Hilly & Scheduled areas



S. No	Component	Item	Cost Norms	Pattern of Assistance
10	Horticulture Mission for North East & Himalayan States (Integratepost harvest management)	10 . R i p e n i n g chamber	Rs. 1.00 lakh/ MT	Credit linked back-ended subsidy @35% (maximum of INR 105 lakh) of the capital cost of project in general areas and 50% (maximum of INR 150 lakh) in case of Hilly & Scheduled areas for a maximum of 300 MT per beneficiary
		11. Evaporative/ low e n e r g y c o o l chamber (8 MT)	Rs. 5.00 lakh/ unit	50% (maximum of INR 2.5 lakh) of total cost
		12. Preservation unit (low cost)	Rs. 2.00 lakh/ unit for new unit and Rs. 1.00 lakh/ unit for up-gradation	50% of total cost (subsidy amount maximum INR 1 lakh for new unit and INR 50000 for up-gradation)
		13. Low cost onion storage structure (25 MT)	Rs. 1.75 lakh/ per unit	50% (maximum of INR 87500) of total cost
		14 . P u s a z e r o e n e r g y c o o l chamber (100 kg)	Rs. 4000 per unit	50% (maximum of INR 2000) of total cost
		15. Integrated cold chain supply system	Project based. Project should comprise of minimum two components listed under 1 to 13 of column heading titled "Item" above with maximum cost of Rs. 600 lakh	Credit linked back-ended subsidy @35% (maximum of INR 210 lakh) of the project in general areas and 50% (maximum of INR 300 lakh) of cost in case Hilly & Scheduled areas, per beneficiary
11	Horticulture Mission for North East & Himalayan States (establishment of marketing infrastructure for horticulture produce in government/ private/ cooperative sector)	1. Terminal market	INR 150 crore/ project	25% to 40% (limited to INR 50 crore) as Public-Private Partnership mode through competitive bidding, in accordance with operational guidelines issued separately
		2 . W h o l e s a l e markets	INR 100 crore/ project	Credit linked back-ended subsidy @25% (maximum up to INR 25 crore) of the capital cost of project in general areas and 33.33% (maximum up to INR 33.33 crore) in case of Hilly & Scheduled areas, per beneficiary

S. No	Component	Item	Cost Norms	Pattern of Assistance
11	Horticulture Mission for North East & Himalayan States (establishment of marketing infrastructure for horticulture produce in government/ private/ cooperative sector)	3. Rural markets/ apni mandies/ direct markets	INR 25 lakh	Credit linked back-ended subsidy @40% (maximum up to INR 10 lakh) of the capital cost of project in general areas and 55% (maximum up to INR 13.75 lakh) in case of Hilly & Scheduled areas, per beneficiary
		4. Retail markets/ o u t l e t s (environmentally controlled)	INR 15 lakh/ unit	Credit linked back-ended subsidy @35% (maximum up to INR 5.25 lakh) of the capital cost of project in general areas and 50% (maximum up to INR 7.5 lakh) in case of Hilly & Scheduled areas, per beneficiary
		5. Static/ Mobile vending cart/ platform with cool chamber	INR 30000/ unit	50% of total cost (maximum up to INR 15000)
		6 . F u n c t i o n a l infrastructure for i) Collection, sorting/ grading, packing units, etc ii) Quality control/ analysis lab	INR 15 lakh INR 200 lakh	Credit linked back-ended subsidy @40% (maximum up to INR 6 lakh) of the capital cost of project in general areas and 55% (maximum up to INR 8.25 lakh) in case of Hilly & Scheduled areas, per beneficiary  100% (maximum up to INR 200 lakh) of the total cost to public sector and 50% (maximum up to INR 100 lakh) of cost to private sector as credit linked back ended subsidy
		7. Gravity operated rope way in hilly areas	INR 15 lakh/ km	Credit linked back-ended @50% (maximum up to INR 7.5 lakh) of capital costs in Hilly areas
12	Horticulture Mission for North East & Himalayan States (Food processing )	Establishment of horticulture based food processing units	Rs. 800 lakh/ unit	Credit linked back ended capital investment assistance of 50% of project cost (maximum up to INR 4 crore) in the State of Uttarakhand



# ! POLICIES, SCHEMES AND INCENTIVES

## Other Schemes

S. No	Scheme	Incentive Type	Pattern of Assistance
13	Agriculture Export Promotion Plan Scheme of APEDA	Setting up of integrated post-harvest-handling system (pack houses with any two or more of the following facilities: 1. Mechanized handling facilities such as sorting, grading, washing, waxing, ripening, packaging & palletisation, etc. 2. Pre cooling facilities with proper handling system as well as cold storage for storing 3. Facilities for treatment such as fumigation, X-ray screening and other screening/detection equipments, hot water dip treatment, Water softening Plant	40% of the cost subject to a ceiling of INR 75.00 lakh per beneficiary



# ! STATE INCENTIVES APPLICABLE FOR FOOD PROCESSING INDUSTRIES

## Incentives offered by State Government

Under MSME 2015 Policy, the state has been divided into following five categories for the purpose of quantum of incentives/subsidies:

Category	Regions Included
Category A	<ul style="list-style-type: none"><li>Whole Districts of Pithoragrah, Uttarkashi, Chamoli, Champawat, Rudraprayag and Bageshwar</li></ul>
Category B	<ul style="list-style-type: none"><li>Whole District of Almora</li><li>Hilly development blocks of District Pauri Garhwal, Tehri Garhwal (excluding areas classified under Category B+)</li><li>All hilly development blocks of District Dehradun and Nainital (excluding areas classified under Category B+ and C)</li></ul>
Category B+	<ul style="list-style-type: none"><li>Kotdwar, Sigadda regions of Dogadda Development Blocks of District of Pauri Garhwal and adjoining plain areas</li><li>Dhalwala, Muni ki Reti, Tapovan regions of Fakot Development Block of Tehri Garhwal and adjoining plain areas</li><li>Whole area of Kotabagh Development Block of District Nainital</li><li>Plain area of Kalsi Development Block of Dehradun District</li></ul>
Category C	<ul style="list-style-type: none"><li>Regions located above 650 mtrs from sea level of Raipur, Sahaspur, Vikasnagar &amp; Doiwala development blocks of District Dehradun.</li><li>Ramnagar and Haldwani Development blocks of District Nainital.</li></ul>
Category D	<ul style="list-style-type: none"><li>Whole Districts of Haridwar and Udham Singh Nagar</li><li>Remaining area of District Dehradun and Nainital (which are not included in category 'B', 'B+' and 'C')</li></ul>

Under Mega Industrial and Investment Policy 2015, the state has been divided into following categories for the purpose of quantum of incentives/subsidies:

Category	Regions Included
Large Projects	<ul style="list-style-type: none"><li>Investments of INR 50 Cr.to 75 Cr.</li></ul>
Mega Projects	<ul style="list-style-type: none"><li>Investments of INR 75 Cr.to 200 Cr.</li></ul>
Ultra-Mega Projects	<ul style="list-style-type: none"><li>Investment above 200 cr.</li></ul>



# STATE INCENTIVES APPLICABLE FOR FOOD PROCESSING INDUSTRIES

## Incentives offered by State Government

Under Mega Industrial and Investment Policy, the state has been divided into following categories for the purpose of quantum of incentives/subsidies:

Sr. No	Head	Mega Industrial and Investment Policy 2015	MSME Policy	Mega Food Park Supporting Scheme
1	Scheme Period:	0 1 / 0 4 / 2 0 1 5   to 31/03/2020	31/01/2015 to 31/03/2020	Ongoing
2	Projects Covered:	New Projects and Existing Projects undergoing expansion shall be covered (which fall within the Industrial Estates Identified as such by the State Government)	New Projects and Existing Projects undergoing expansion shall be covered	Mega Food Parks and also to all the "Food Processing Units and their Packaging Units" which are established in the MFP
3	Interest Subsidy:	7% interest subsidy for 5 years from the date of start of commercial production.  Investment – Interest 50-75 Cr – 25L Max 75-200 Cr – 35L Max >200 Cr – 50L Max	Category A - 10% Maximum up to INR 8 lacs/yr/unit	Interest Subsidy of 06 % to a maximum of 04 Lakhs every year till 05 Years
			Category B - 8% Maximum up to INR 6 lacs/yr/unit	
			Category B+ - 8% Maximum up to INR 6 lacs/yr/unit	
			Category C - 6% Maximum up to INR 4 lacs/yr/unit	
			Category D - NIL	
4			Category A - 100% for the first 5 yr and 90% thereafter	
			Category B - 100% for the first 5 yr and 75% thereafter	

Sr. No	Head	Mega Industrial and Investment Policy 2015	MSME Policy	Mega Food Park Supporting Scheme
4	VAT Concession (With the advent of GST, the current provision of reimbursement of VAT now stands discontinued. However, reimbursement of net State's share after adjustment of ITC on sale (B2C) is under consideration by State Government) Concession in land registration fees: Subsidy on ETP:	1. Large Project 30% VAT concession  2. Mega Projects/Ultra Mega Project: 50 % VAT concession.	Category B+ - 100% for the first 5 yr and 75% thereafter	100% exemption on VAT for 5 years from the date of Production
			Category C - NIL	
			Category D - NIL	
5	Concession in land registration fees:	Land registration fee as INR 1/- per INR 1000/-.		
6	Subsidy on ETP:	30% Capital Subsidy to a maximum limit of 50 lacs		
7	Power Assistance/Power Bill Rebate:	Rebate of 1/- per unit on the power bill and 100% rebate shall be offered on electric duty for 7 years.	Category A - If Sanctioned Load is up to 100 KVA then 100% for the first 5 yr and 75% thereafter. If Sanctioned Load is above 100 KVA then 60%	Electricity Rates that are laid down by the Uttarakhand Electricity Regulatory Commission (UERC) under Agricultural Areas for Irrigation Tube wells are applicable to Food Processing Units with Undisturbed Power Supply till 5 Years from the date of Production
			Category B - If Sanctioned Load is up to 100 KVA then 100% for the first 5 yr and 60% thereafter. If Sanctioned Load is above 100 KVA then 50%	
			Category B+ - If Sanctioned Load is up to 100 KVA then 100% for the first 5 yr and 60% thereafter. If Sanctioned Load is above 100 KVA then 50%	
			Category C - NIL	
			Category D - NIL	



Sr. No	Head	Mega Industrial and Investment Policy 2015	MSME Policy	Mega Food Park Supporting Scheme
			Note: This facility will not be applicable to Hotel/Motel, Resort, Guest House, Steel Rolling Mill, Electric Furnace and other heavy Power consumption enterprises.	
8	Rebate of Stamp Duty:	50% exemption on stamp duty	Category A - 100% Concession	100 % Stamp Duty Discount will be granted on Purchase on Land and Lease Deed for the first time
			Category B - 100% Concession	
			Category B+ - 100% Concession	
			Category C - 100% Concession	
			Category D - 50% Concession	
9	Rebate on Mandi Tax	75% rebate in mandi tax.		100% exemption on Mandi Fee on Raw Materials for 5 years from the date of Production
10	Land rates Rebate	Rebate of 15%, 25% and 30% on SIIDCUL prevailing land rate for Large Projects, Mega Projects and Ultra Mega Projects respectively.		
11	Payment Mode	20% of the land value is to be paid at the time of allotment remaining in equal annual instalment of 7 years along with prevailing interest.		
12	State Capital Subsidy:		Category A - 40% to a maximum limit of 40 lacs	
			Category B - 35% to a maximum limit of 35 lacs	
			Category B+ - 35% to a maximum limit of 35 lacs	
			Category C - 30% to a maximum limit of 30 lacs	
			Category D - 15% to a maximum limit of 15 lacs	
13	Incentive for Extra Employment	Provision of subsidy @ Rs 500 per month per Male employee & Rs 700 per month per Female employee.(In case of employment is more than double to specified threshold of direct employees)		

Sr. No	Head	Mega Industrial and Investment Policy 2015	MSME Policy	Mega Food Park Supporting Scheme
14	Special State Transport Subsidy		Category A - 7% of Annual Turnover (Maximum up to INR 7 lacs/yr/unit) or Inbound/ Outbound Logistics Cost whichever is less	
			Category B - 5% of Annual Turnover (Maximum up to INR 5 lacs/yr/unit) or Inbound/ Outbound Logistics Cost whichever is less	
			Category B+ - 5% of Annual Turnover (Maximum up to INR 5 lacs/yr/unit) or Inbound/ Outbound Logistics Cost whichever is less	
			Category C - NIL	
			Category D - NIL	





# RESOURCE PROFILE OF UTTARAKHAND

Other Schemes					
Uttarakhand Production Statistics / Infrastructure Highlights					
Uttarakhand Production Statistics / Infrastructure Highlights					
S. No	Variable	Value / Input	Year	Source	Remarks
1. Production Statistics					
1.1 Fruits and Vegetables					
1.1.1		Ranked first in production of PEACH (54.04% share in 2015-16)	2015-16	<a href="http://agriexchange.apeda.gov.in/India%20Production/India_Productions.aspx?cat=fruit&amp;hscode=1053">http://agriexchange.apeda.gov.in/India%20Production/India_Productions.aspx?cat=fruit&amp;hscode=1053</a>	
1.1.2		Ranked first in production of PLUM (44.04% share in 2015-16)	2015-16	<a href="http://agriexchange.apeda.gov.in/India%20Production/India_Productions.aspx?cat=fruit&amp;hscode=1057">http://agriexchange.apeda.gov.in/India%20Production/India_Productions.aspx?cat=fruit&amp;hscode=1057</a>	
1.1.3		Ranked second in production of WALNUT (8.45% share in 2015-16)	2015-16	<a href="http://agriexchange.apeda.gov.in/India%20Production/India_Productions.aspx?cat=fruit&amp;hscode=1061">http://agriexchange.apeda.gov.in/India%20Production/India_Productions.aspx?cat=fruit&amp;hscode=1061</a>	
1.1.4		Ranked second in production of PEAR (24.39% share in 2015-16)	2015-16	<a href="http://agriexchange.apeda.gov.in/India%20Production/India_Productions.aspx?cat=fruit&amp;hscode=1054">http://agriexchange.apeda.gov.in/India%20Production/India_Productions.aspx?cat=fruit&amp;hscode=1054</a>	
1.1.5		Ranked third in Production of APPLE (2.46% share in 2015-16)	2015-16	<a href="http://agriexchange.apeda.gov.in/India%20Production/India_Productions.aspx?cat=fruit&amp;hscode=1040">http://agriexchange.apeda.gov.in/India%20Production/India_Productions.aspx?cat=fruit&amp;hscode=1040</a>	
1.1.6 Production (MT) for top 3 fruits and vegetables					
1.1.6.1	Fruit 1	Mango: 1,50,140 MT	2016-17	Department of Horticulture, Uttarakhand	
1.1.6.2	Fruit 2	Pear: 79,572 MT	2016-17	Department of Horticulture, Uttarakhand	
1.1.6.3	Fruit 3	Apple: 62,062 MT	2016-17	Department of Horticulture, Uttarakhand	
1.1.6.4	Vegetable 1	Potato: 3,60,371 MT	2016-17	Department of Horticulture, Uttarakhand	

1.1.6 Production (MT) for top 3 fruits and vegetables					
1.1.6.5	Vegetable 2	Tomato: 94,005 MT	2016-17	Department of Horticulture, Uttarakhand	
1.1.6.6	Vegetable 3	Peas: 87,811 MT; Cabbage: 67,184 MT	2016-17	Department of Horticulture, Uttarakhand	
1.2 Cereals and Grains					
1.2.1	Total Production (MT)	16,38,000 MT	2014-15	<a href="http://www.mospi.gov.in/sites/default/files/statistical_year_book_india_2015/Table-8.3.xlsx">http://www.mospi.gov.in/sites/default/files/statistical_year_book_india_2015/Table-8.3.xlsx</a>	
1.2.2	CAGR	-2.53%	2014-15	<a href="http://www.mospi.gov.in/sites/default/files/statistical_year_book_india_2015/Table-8.3.xlsx">http://www.mospi.gov.in/sites/default/files/statistical_year_book_india_2015/Table-8.3.xlsx</a>	Calculated from 2010-11
1.2.3 Production (MT) and CAGR for top 3 cereals and grains in the State					
1.2.3.1	Cereals / Grains 1	Wheat: 6,62,000 MT CAGR: -6.82%	2014-15	<a href="http://www.mospi.gov.in/sites/default/files/statistical_year_book_india_2015/Table-8.3.xlsx">http://www.mospi.gov.in/sites/default/files/statistical_year_book_india_2015/Table-8.3.xlsx</a>	
1.2.3.2	Cereals / Grains 2	Rice: 6,06,000 MT CAGR:2.45%	2014-15	<a href="http://www.mospi.gov.in/sites/default/files/statistical_year_book_india_2015/Table-8.3.xlsx">http://www.mospi.gov.in/sites/default/files/statistical_year_book_india_2015/Table-8.3.xlsx</a>	
1.2.3.3	Cereals / Grains 3	Ragi: 1,56,000 MT CAGR: -2.27%	2014-15	<a href="http://www.mospi.gov.in/sites/default/files/statistical_year_book_india_2015/Table-8.3.xlsx">http://www.mospi.gov.in/sites/default/files/statistical_year_book_india_2015/Table-8.3.xlsx</a>	
1.2.4.4	Key Highlights	Sugarcane production: 59, 80,000 MT	2014-15	<a href="http://eands.dacnet.nic.in/PDF/Glance-2016.pdf">http://eands.dacnet.nic.in/PDF/Glance-2016.pdf</a>	
2 Infrastructure Highlights					
2.1	Existing industrial areas (number and area in hectares)	107 industrial areas	2014-15	Page 30 of <a href="http://dcmsme.gov.in/dips/state_wise_dips/SIPSR%20-%20Uttarakhand.pdf">http://dcmsme.gov.in/dips/state_wise_dips/SIPSR%20-%20Uttarakhand.pdf</a>	
		1. Lychees (Udham Singh Nagar, Dehradun and Nainital) 2. Flowers (Dehradun, Haridwar, Udham Singh Nagar, Nainital) 3. Basmati Rice (Udham Singh Nagar, Nainital, Dehradun and Haridwar) 4. Medicinal & Aromatic Plants (Uttarkashi, Chamoli, Pithoragarh, Dehradun, Nainital, Haridwar and Udham Singh Nagar)		Department of Horticulture, Uttarakhand	
2.2	Details of major fruits and flowers grown in districts of Uttarakhand				



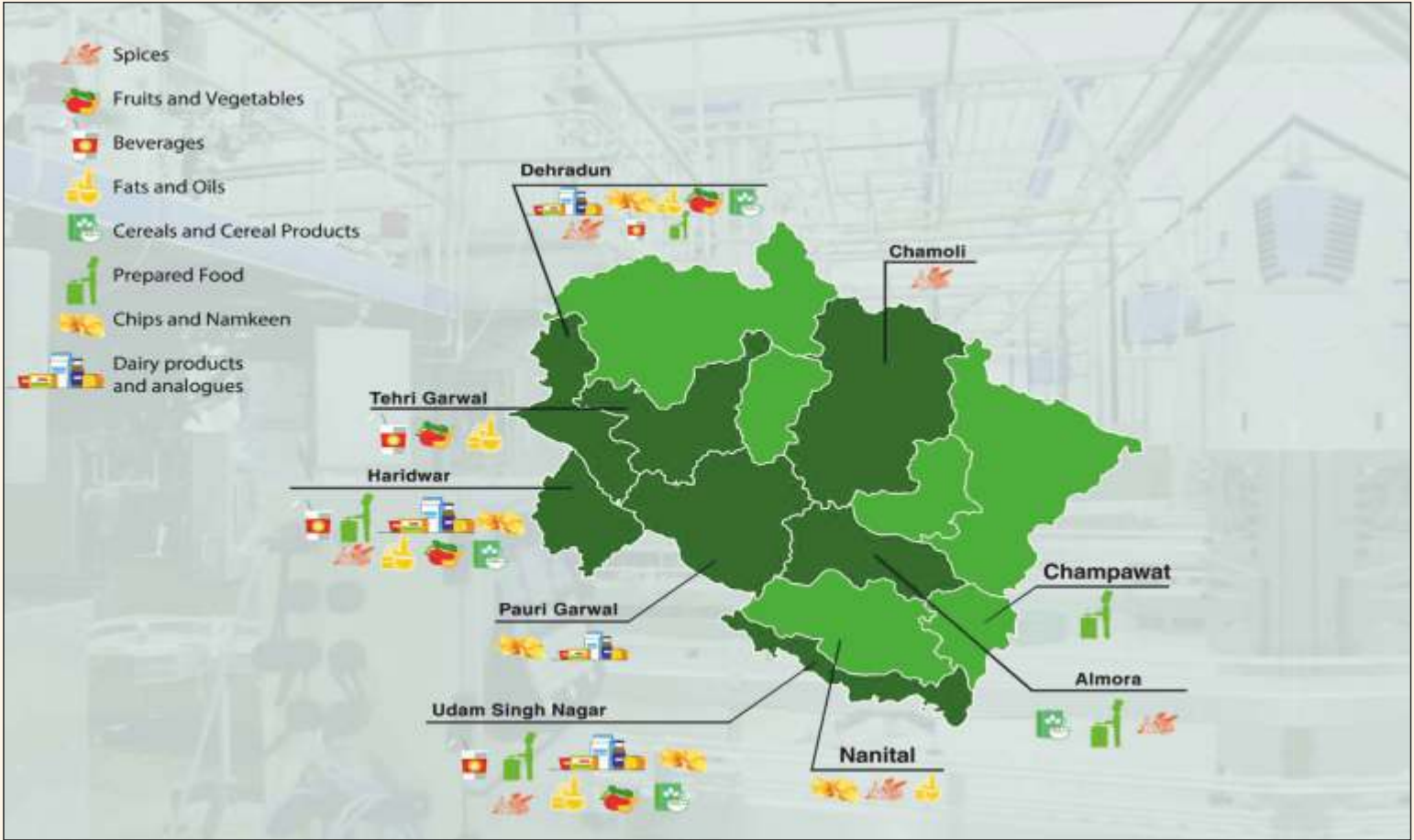
2.3 Marketing Infrastructure					
2.3.1 Type of Food Parks					
2.3.1.1	(Food Park/ Mega Food Park)	Mega Food Park	Feb-17	<a href="http://mofpi.nic.in/sites/default/files/ministrys_notification.pdf">http://mofpi.nic.in/sites/default/files/ministrys_notification.pdf</a>	
2.3.1.1.1	Name and Location	Patanjali Mega Food Park (promoted by Patanjali Food and Herbal Park Pvt Ltd), Village Padartha, Haridwar			
2.3.1.1.2	Size (in hectares)	28.39 Ha			
2.3.1.2	(Food Park/ Mega Food Park)	Mega Food Park		<a href="http://mofpi.nic.in/sites/default/files/ministrys_notification.pdf">http://mofpi.nic.in/sites/default/files/ministrys_notification.pdf</a>	
2.3.1.2.1	Name and Location	Himalayan Food Park promoted by Himalayan Food Park Pvt Ltd, Mauha Kheraganj village, Kashipur		<a href="http://www.himalayanfoodpark.com/">http://www.himalayanfoodpark.com/</a> <a href="http://www.himalayanfoodpark.com/core%20pro.html">http://www.himalayanfoodpark.com/core%20pro.html</a>	
2.3.1.2.2	Size (in hectares)	20.23 Ha			



# ! FOOD PROCESSING CLUSTERS IN UTTARAKHAND

S. No	Category	Districts
1	Dairy Products and analogues	Haridwar, Dehradun, Pauri Garhwal, Udham Singh Nagar
2	Fruits and Vegetables	Haridwar, Dehradun, Tehri Garhwal, Udham Singh Nagar, Nainital
3	Prepared Food	Almora, Champawat, Haridwar, Dehradun, Udham Singh Nagar, Nainital
4	Spices	Almora, Chamoli, Haridwar, Dehradun, Udham Singh Nagar, Nainital
5	Fats and Oil	Haridwar, Dehradun, Tehri Garhwal, Udham Singh Nagar, Nainital
6	Cereals and Cereal Production	Haridwar, Dehradun, Almora, Udham Singh Nagar, Nainital
7	Beverages	Haridwar, Dehradun, Tehri Garhwal, Udham Singh Nagar
8	Chips and Namkeen	Haridwar, Dehradun, Pauri Garhwal, Udham Singh Nagar, Nainital

Source: Food Processing Cluster in Uttarakhand, Investor Portal, MoFPI





# COLD CHAIN PROJECTS IN UTTARAKHAND

S. No	Name of Project & Address	Total Project Cost (INR in lakh)	Eligible Grant (INR in lakh)	Total Capacity (in MT)
1	M/s Trilok Singh Chemma, 2Km. stone, Jaitpur, Kundeshwari Road, Kashipur, U.S. Nagar	1590.02	1000	3000
2	M/s Alisan International Private Limited, Khet No. 216, Village-Korla, NH 74, Gadarpur Road, Tehsil-Kiccha, Rudrapur, U.S. Nagar	1673	1000	2400
3	M/s Rana Frozen Foods, Khasra No. 171, Village-Sundhari (Jurasi), Tehsil- Roorkee, Haridwar	1688.64	1000	4000
4	M/s Ram Solvent Extraction Private Limited, 2 Km. Stone, Kashipur Road, Jaspur, U.S. Nagar,	1008.58	756.45	3000
5	M/s Neutrons Agri Produce , Gadarpur, U.S. Nagar	1676.34	977.66	2508
6	M/s B.P. Frozen Foods, Dhabora Mustakam, Parmanandpur, Tehsil-Kashipur, U.S.Nagar	1714.6	1000	2400
7	M/s Powercon Industries Limited (A-29), Vikrampur, Tehsil- Bazpur, U.S. Nagar	1836.4	1000	3000
8	M/s Bajpai Refrigeratin and Bakers Co., IDEB industrial area, Phase-I, Mahukheraganj, Kashipur, U.S.Nagar	1288.7	966.53	3000
9	M/s E Alliances , C-11/1, Industrial Area, Selaqui, Dehradun-248197	1149.95	862.45	1200
10	M/s Bio Life, P.O.N. Ashram , Ramgarh, District-Nainital	1771	981	2500
11	M/s Brar Frozen , , Ranjit Nagar, Farms, P.O.-Bazpur, District-U.S.Nagar	1480	706.87	2400
12	M/s Sharda Agri Foods, Village-Bara, Tehsil-Kiccha, U.S. Nagar	1740.39	750	2500
13	M/s Pal Frozen Foods, Nainital	1612	1000	2500
14	M/s Konark Industries, Plot No. 14, IDEF, Industrial area, Mahukheraganj, Kashipur	1713.82	1000	3000

S. No	Name of Project & Address	Total Project Cost (INR in lakh)	Eligible Grant (INR in lakh)	Total Capacity (in MT)
15	M/s Gupta Agro , village-Bichpur, Tehsil-Bajpur, U.S. Nagar	2082.49	1000	3000
16	M/s Agarwal Frozen Foods, US Nagar	1675	696	3000
17	M/s Mohyal Foods Private Limited, haridwar	1682	876.73	3000
18	M/s S.K. Frozen Foods, Udham Singh nagar, Uttarakhand	1560	923.34	2200
19	M/s Shanti Frozen Foods, Udham Singh Nagar	1754.5	876.71	10800
20	M/s Stellar cold Chain, Kashipur, U.S. Nagar	1886.53	983.1	3500
21	M/s Shivanya Frozen Food Products, Udham Singh Nagar	1680	736	1600
22	M/s Aveena Milk Products, Laftpurkhubanpur, Bhagwanpur, Haridwar.	1872	1000	137600 Ltr. Per day
23	M/s Rajshree Milk Products , Simla Pistor, Kiccha Road, Rudrapur, U.S. Nagar	1672	902	50000 Ltr. Per day
24	M/s Himalayan Agro Vital Enterprises, Village-Chandpur Khurd, Vikasnagar, Dehradun (Sanctioned underational mission on food processing NMFP) Total	835.05	477.9275	2000
		38643.01	21472.7675	254108





## POTENTIAL INVESTIBLE PROJECTS

Project Name	Processable Products	Value Proposition
Starch Processing	Starch, glucose and related by-products	Rapidly growing global demand for corn starch in pharmaceuticals and ready-to-eat food items.
Rice Milling	Processed and packaged rice, malted food	Dehradun basmati rice is a special variety. Global rice bran oil market is expected to grow at a CAGR of 5% till 2021. India has a potential of 1.4 million tonnes of rice bran oil production but current production is 0.9 million tonne thereby offering significant opportunities.
Honey Processing	Processed Honey / Organic Honey	The global honey food market is expected to grow at a CAGR of 5.49% during the period 2017-2021. In India, honey industry is growing at around 15 per cent currently, while the domestic honey market – branded and unbranded – is estimated to be about Rs 2,000 crore
Pulse mill	Processed and packaged dal	There is a large market for pulses/dal in India where 90% of the produce is consumed locally. There is no organised dal milling activity in the region as the market is highly fragmented thus providing an opportunity for consolidation.
Fruits and vegetables processing	Dehydrated vegetables and fruits	India is the second largest producer of Fruits and vegetables in the world after China. Dried and preserved vegetables market in India is expected to grow at 16% CAGR by 2020 whereas global freeze-dried food market is expected to grow at 7% CAGR till 2021.
Milk Processing	High quality bacteria free chilled milk without souring, curdling. By-products such as cream, butter, ghee, butter-milk, curd, yoghurt, paneer, cheese	India is the largest producer of milk in 2014-15 contributing 18.5% of the world milk production at 146.3 million tonnes. Production in 2015-16 is 155.5 million tonnes. India exported 0.03 million tonnes of milk in 2015-16 to United Arab Emirates, Pakistan, Bangladesh, Singapore
Fruit Processing	Dehydrated fruits, fruit juice, jam/jelly/ marmalade, squash, papaya candy, watermelon juice, banana powder, fruit wine, processed pineapple, osmo-dried fruits	Global fruit processing market is expected to grow at a CAGR of 7.6% during 2017-23. India's fruit processing industry is however growing at a much faster rate of 13%. Uttarakhand is the highest producer of pears, plum and peach and third largest producers of apple.
Spice Essential Oil Extraction & Processing	Whole and ground spices, essential oils, spice paste, spice extracts	Total spices export from India stood at 0.95 Million tonnes valued at USD 2.63 Billion in 2016-17, registering a year-on-year growth of 12 percent by volume. While global seasonings and spices market is expected to increase from USD 12.17 billion in 2014, and reach USD 16.13 billion in 2020, with a CAGR of 4.9%

## DEPARTMENTAL CONTACT DETAILS

### Investment Facilitation Centre, Directorate of Industries

**Address :** Investment Facilitation Centre  
C/o Directorate of Industries  
Industrial Area, Patel Nagar, Dehradun, Uttarakhand - 248001  
**Website :** [www.investuttarakhand.com](http://www.investuttarakhand.com)  
**Email ID :** [ifc.uttarakhand@gmail.com](mailto:ifc.uttarakhand@gmail.com)  
**Phone :** +91-135-2728227

### State Infrastructure and Industrial Development Corporation of Uttarakhand Ltd.(SIIDCUL)

**Address :** State Infrastructure and Industrial Development Corporation of Uttarakhand Ltd.(SIIDCUL)  
IT Park, Sahastradhara Road, Dehradun, Uttarakhand - 248001  
**Website :** [www.siidcul.com/](http://www.siidcul.com/)  
**Email ID :** [contactus@siidcul.com](mailto:contactus@siidcul.com)  
**Phone :** +91-135-2708100

### State Horticulture Mission

**Address :** State Horticulture Mission, Dehradun, Uttarakhand-248001  
**Website :** [www.investuttarakhand.com](http://www.investuttarakhand.com)  
**Email ID :** [missionhortiuk@gmail.com](mailto:missionhortiuk@gmail.com)  
**Phone :** +91-135- 2759799

### Disclaimer:

State Horticulture Mission, Government of Uttarakhand has made every attempt to ensure the accuracy and reliability of the information provided in this document. However, the information is provided "as is" without warranty of any kind. The department periodically adds, changes, improves or updates the information in this document without any notice. For further clarification kindly get in touch with State Horticulture Mission, Government of Uttarakhand.



